

## DHECO.com AW93 Scope Mount Installation Instructions



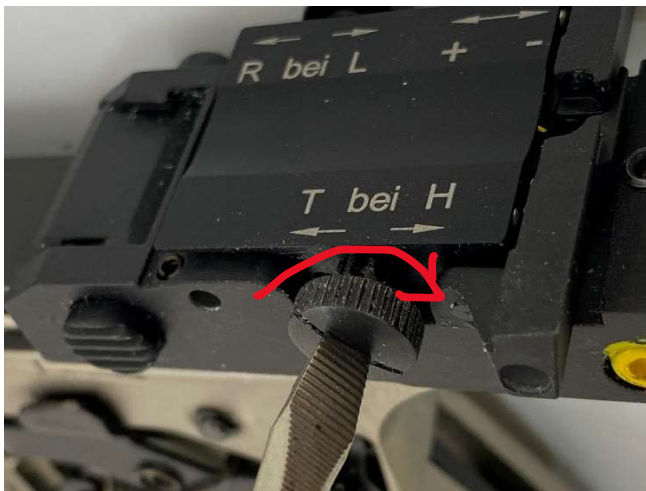
Using a 2.5 MM Allen wrench or Flat Blade screw driver depending on your grips, remove the 2 grip screws and slide the grip off the bottom



Remove plastic plug from the rear.

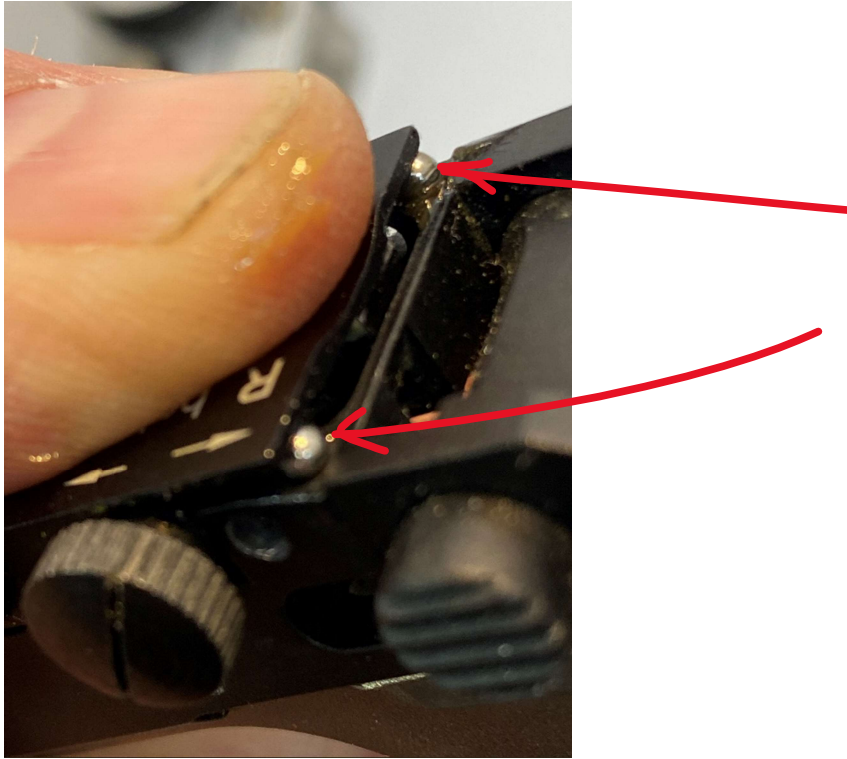


Step 3) Turn elevation screw clockwise to the stop (in the H direction)  
This relieves pressure on the springs under the sight.

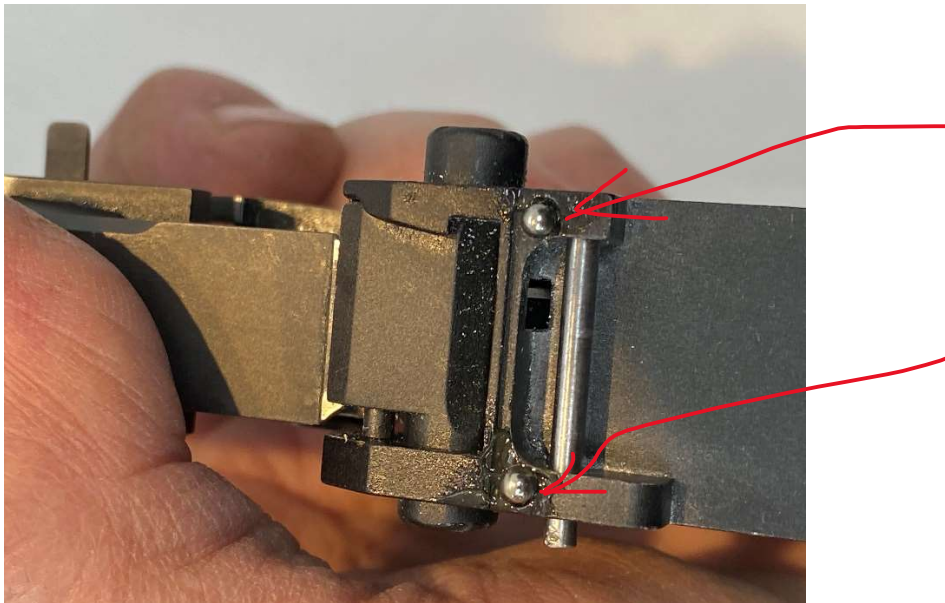


I recommend doing this in a bathtub with the drain closed, if you drop the bearings or spring they are easier to find that way. Just my preference.

Note: Do not lose the springs and bearings.



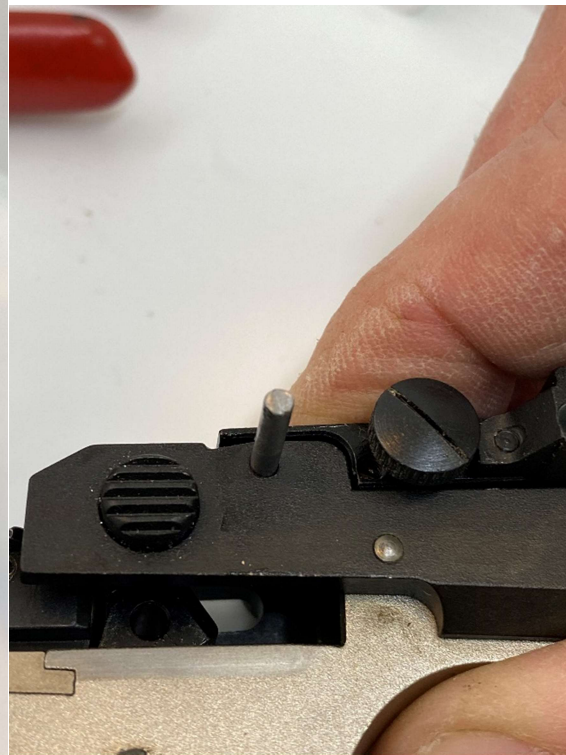
Parts that like to get away shown under rear sight below:



From the right side push the Iron sight retaining pivot pin by pushing it out with pin provided from the right to left.



Once you get it started it may be easier to pull the pin with pliers.



If the springs don't disappear, remove them by pulling them out with a toothpick or dental tool.



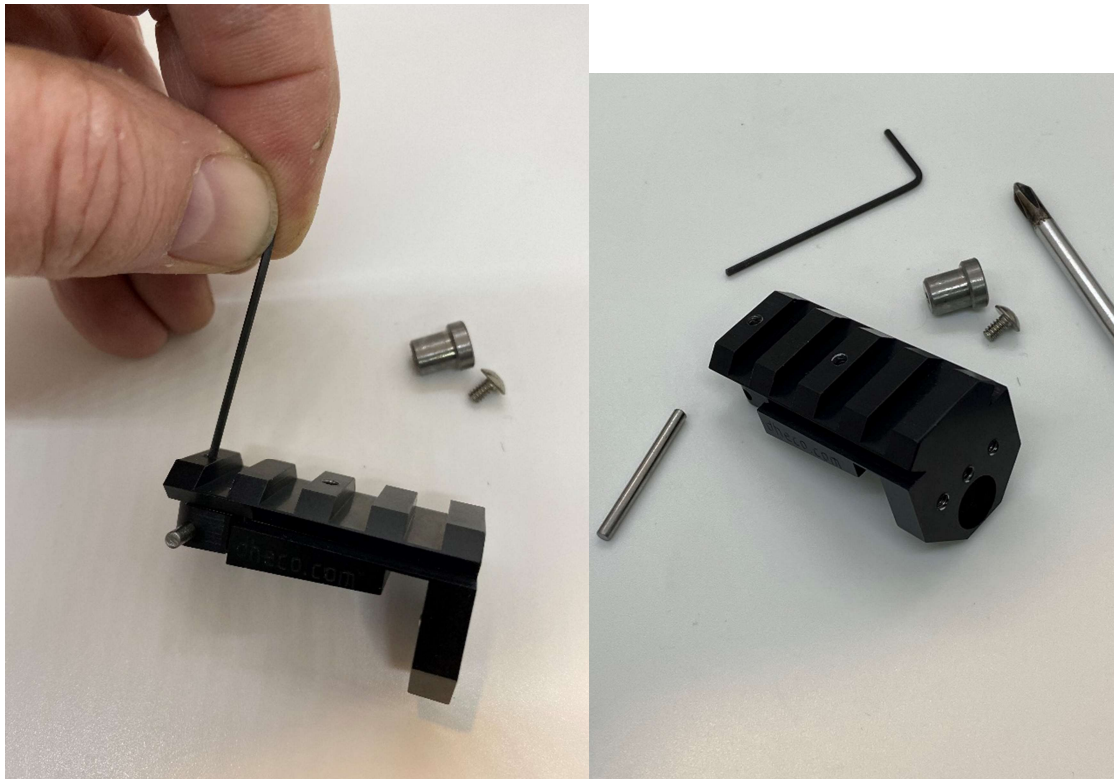
It would be a good idea to put these parts safely away in a baggie for safe keeping.



To start the installation of the new scope mount remove the Philips screw from the rear of the mount, remove the large retaining pin.



Loosen the front Allen screw that retains the front mounting pin.



Place the scope mount where the Iron site was removed as shown.



Install the front retaining pin provided. Center it in the frame.





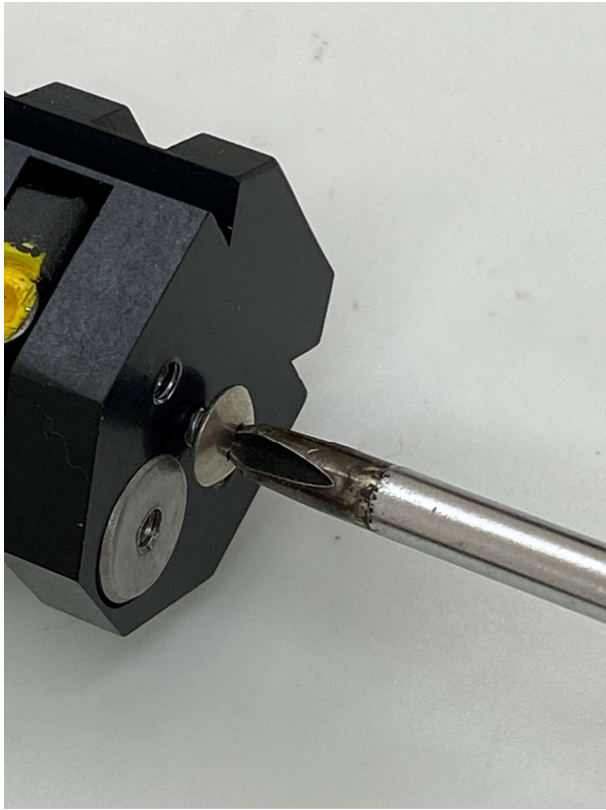
Note: It may require a little tappy tap tap.



Push down the rear and install the large retaining pin. There should be a notch in the pin to indicate up or down. If the pin is hard in insert have the notch up. If it goes in real easy turn it and re-insert to get the snugest fit.



Install the Philips screw to retain the large rear pin.



Note, the threaded hole in the rear of the large pin is to use when removing the mount, screw a 4-40 screw in and pull the screw to remove the pin.

Tighten the front pin Allen screw, this should be quite snug.



The following 3 Allen screws are just to remove any play and snug up the fit. These should tight but not be really tight.



The mounting of the scope rail is complete.

The grips will need to be carved to make clearance for the mount well above where the hand contacts the wood. Remove just enough to clear the mount. In the picture below I did not take much care in making the cutout pretty, I was in a hurry to get to the range and sight it in. A small wood saw, Dremel, or pocket knife can be used, Pick the one you are most comfortable with.



Mount your dot and enjoy.



Any questions email [support@dheco.com](mailto:support@dheco.com)